



Yellow Perch Fishing Zone Boundaries on Lake Erie

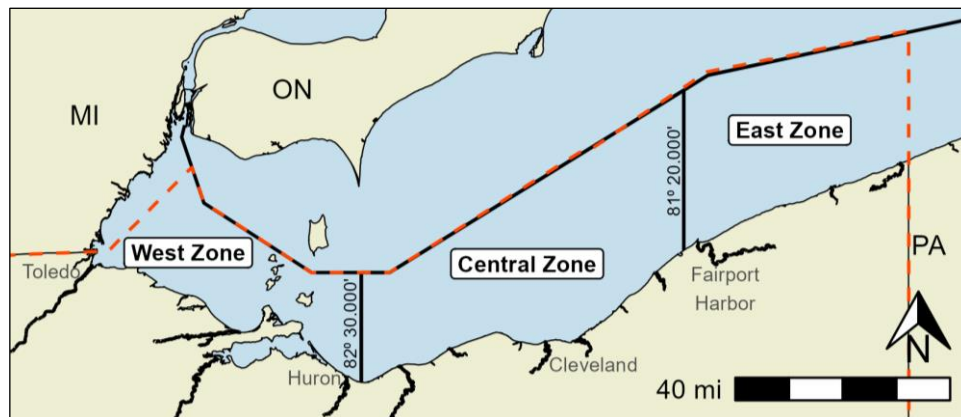
Ohio yellow perch fisheries are managed in 3 zones where daily limits may differ.

Angler Daily Limits

(May 1, 2025 – April 30, 2026):

- 30/day in the west zone.
- 10/day in the central zone.
- 20/day in the east zone.

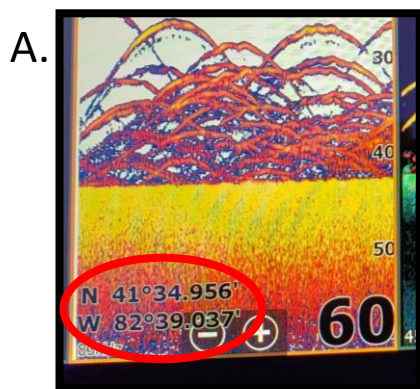
If your longitude is less than W 82° 30.000' but greater than W 81° 20.000' you are in the Central Zone.



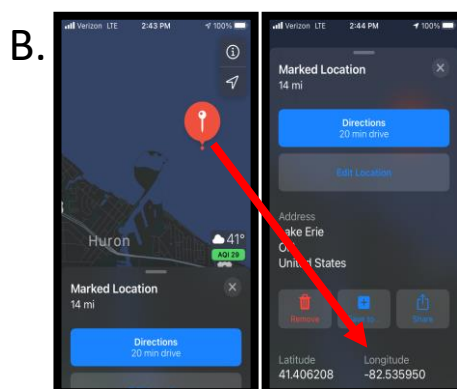
Downloadable boundary files are available at wildohio.gov.

How do I find my location?

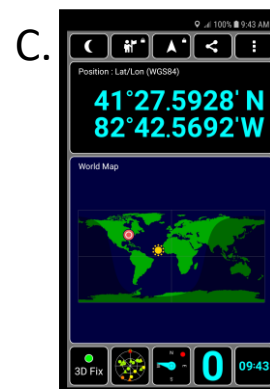
- GPS-enabled devices can identify your current location coordinates, including nautical chartplotter, hand-held, or automotive GPS, smartphones and some tablets.
- Position can be displayed using different formats. Degrees Decimal-Minutes (dd° mm.mmm') is standard for nautical navigation some apps default to Decimal Degrees (dd.ddddd°) and can't be changed.
- West longitude can also be displayed with a negative sign (W 82° 30.000' = -82° 30.000').
- Chartplotters and GPS devices can be set to display your coordinates on the main screen (Photo A).
- Some apps don't display coordinates on the main screen. If you mark a location and view it, you will see the coordinates (Photo B). Free apps are available on your app store that display coordinates (Photo C).



Lowrance Chartplotter



App: Maps on iPhone



App: GPS Test

Ohio zone boundaries using three common GPS coordinate systems. Boundaries are lines of longitude.

Coordinate System	West-Central Zone Boundary	Central-East Zone Boundary
Degrees decimal minutes	W 82° 30.000'	W 81° 20.000'
Degrees minutes seconds	W 82° 30' 00.00"	W 81° 20' 00.00"
Decimal degrees	W 82.50000°	W 81.33333°